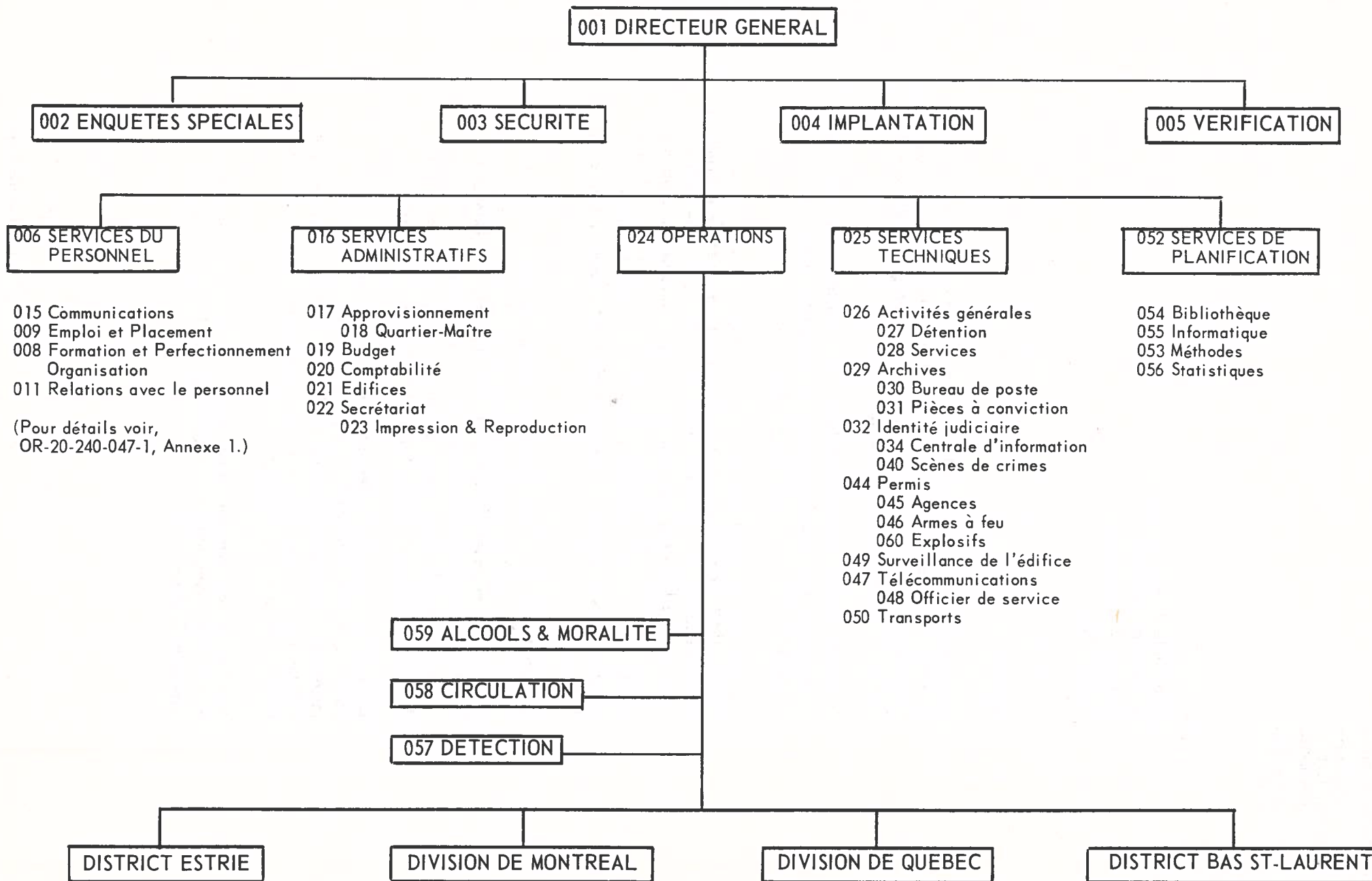
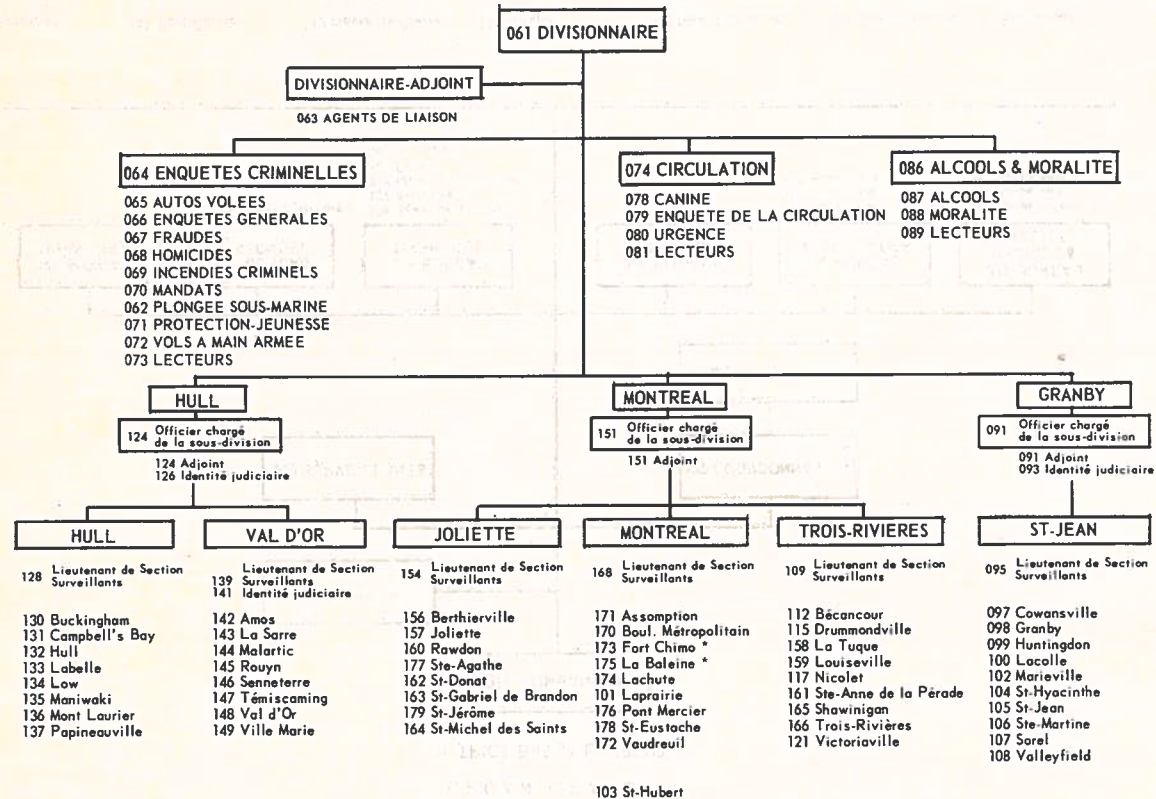


ORGANIGRAMME
SÛRETÉ DU QUÉBEC

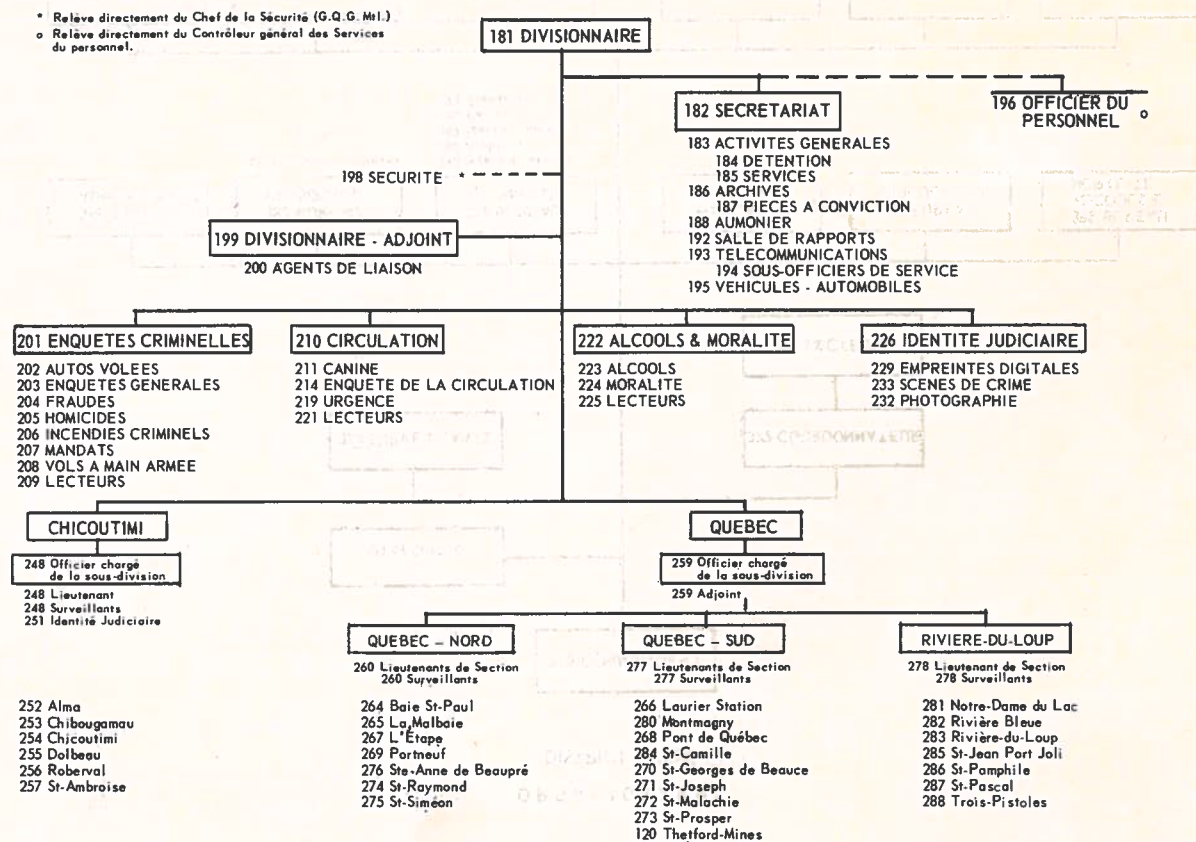


ORGANIGRAMME
DIVISION DE MONTREAL



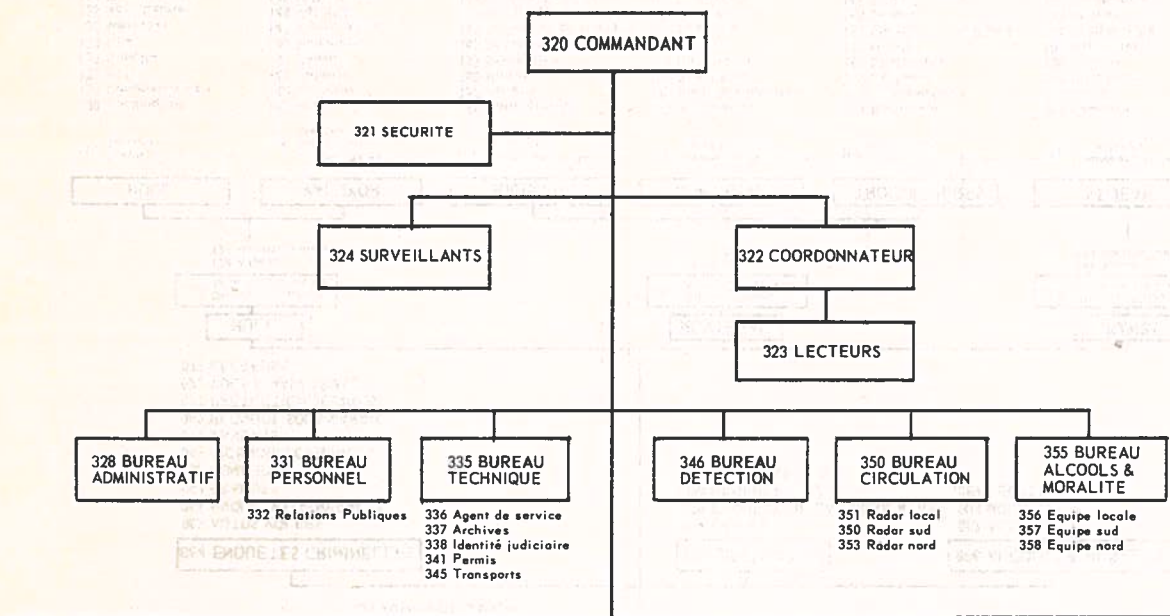
* Relèvent directement du Divisionnaire

ORGANIGRAMME
DIVISION DE QUEBEC



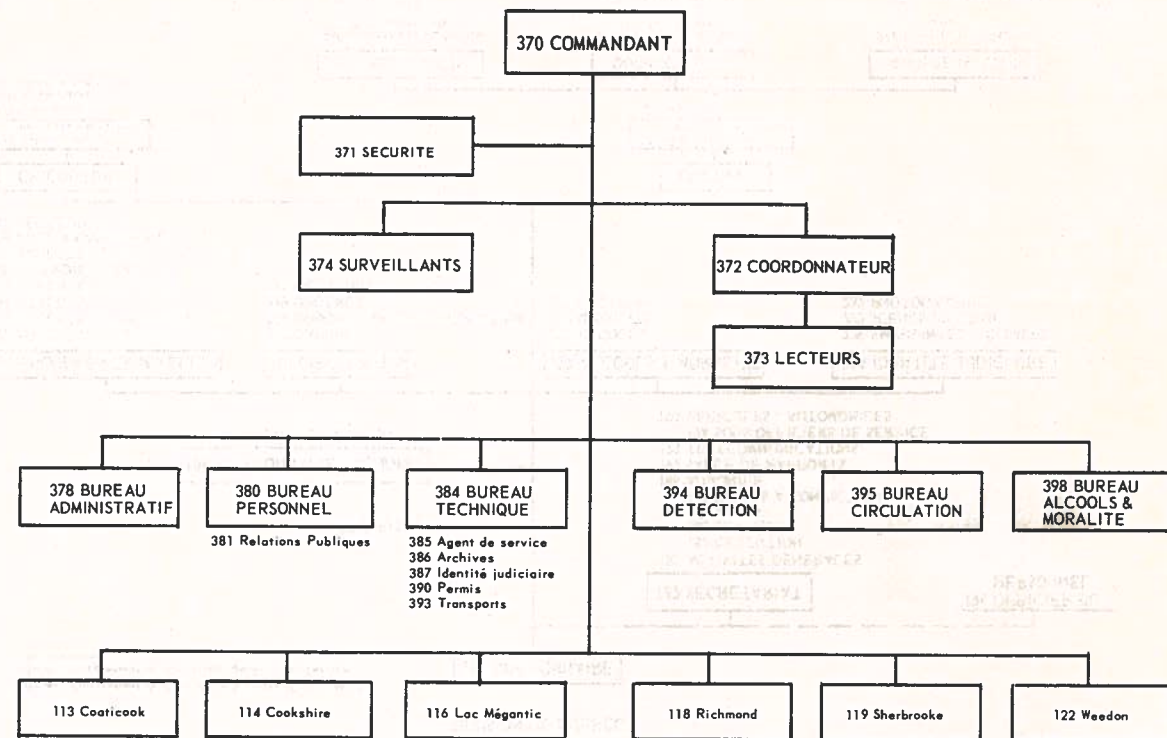
* Relève directement du Chef de la Sécurité (G.Q.G. Mtl.)
 o Relève directement du Contrôleur général des Services du personnel.

ORGANIGRAMME
DISTRICT BAS ST-LAURENT



- | | | | | | | |
|------------------|-------------------------|---------------------|--------------|------------------|------------------------|---------------|
| 246 Tadoussac | 243 Port Cartier | 242 Hôvre St-Pierre | 299 Gaspé | 302 New Richmond | 300 Grande Vallée | 307 Amqui |
| 241 Forestville | 245 Sept-Iles | 239 Baie Comeau | 303 Percé | 309 Matapédia | 312 Ste-Anne des Monts | 310 Mont Joli |
| 240 Baie Trinité | 244 Rivière au Tonnerre | 297 Cap aux Meules | 298 Chandler | 301 New Carlisle | 308 Matane | 311 Rimouski |

ORGANIGRAMME
DISTRICT ESTRIE



- | | | | | | |
|---------------|---------------|------------------|--------------|----------------|------------|
| 113 Coaticook | 114 Cookshire | 116 Lac Mégantic | 118 Richmond | 119 Sherbrooke | 122 Weedon |
|---------------|---------------|------------------|--------------|----------------|------------|